

# LAGUNA HOUSE

5<sup>TH</sup> - 9<sup>TH</sup> FLOOR | UNIT 02

3 BEDROOM 3.5 BATH

NOTES

---



---



---



---



---



---



---



---



---



---

### INTERIOR AND COVERED SUMMER KITCHEN

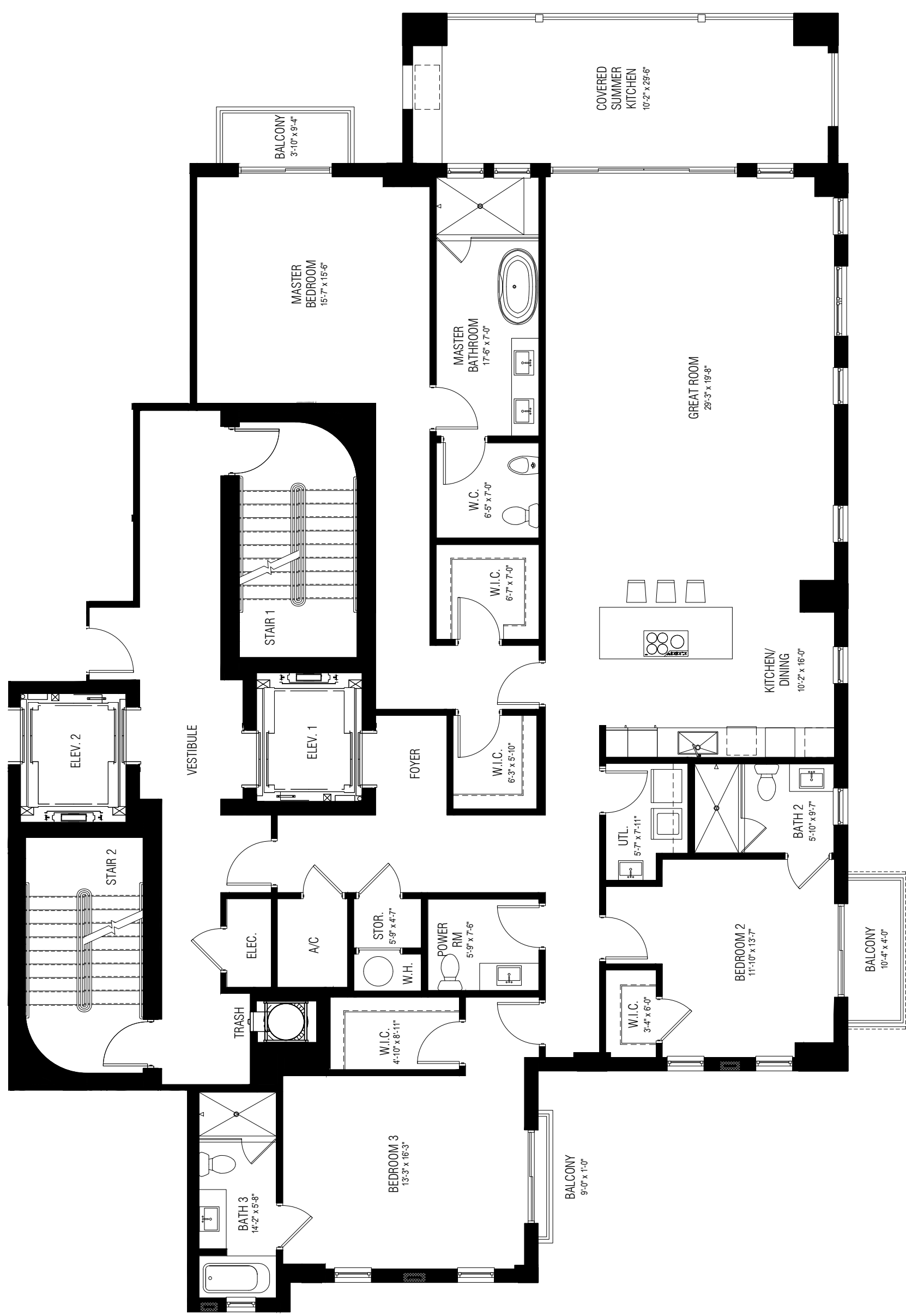
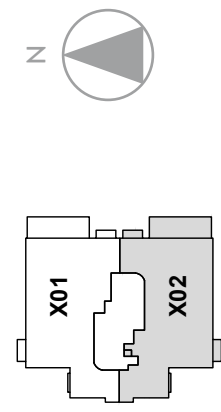
2,964 S.F. | 275.36 M<sup>2</sup>

### PRIVATE TERRACES

86 S.F. | 7.99 M<sup>2</sup>

### TOTAL

3,050 S.F. | 283.35 M<sup>2</sup>



ORAL REPRESENTATIONS CANNOT BE RELIED UPON AS CORRECTLY STATING REPRESENTATIONS OF THE DEVELOPER. FOR CORRECT REPRESENTATIONS, MAKE REFERENCE TO THIS BROCHURE AND TO THE DOCUMENTS REQUIRED BY SECTION 718.503, FLORIDA STATUTES, TO BE FURNISHED BY A DEVELOPER TO A BUYER OR LESSEE. THE SKETCHES, RENDERINGS, PICTURES AND ILLUSTRATIONS ARE PROPOSED ONLY AND THE DEVELOPER RESERVES THE RIGHT TO MODIFY, REVISE OR WITHDRAW ANY OR ALL OF THE SAME AT ITS SOLE DISCRETION WITHOUT NOTICE. INCLUDING AMENITIES, FEATURES AND SPECIFICATIONS. ANY FURNITURE, APPLIANCES, OR DECORATOR ITEMS DEPICTED HEREIN ARE SHOWN FOR ARTISTIC AND ILLUSTRATIVE PURPOSES ONLY AND ARE NOT INCLUDED IN THE PURCHASE AND SALE OF THE RESIDENCE. STATED DIMENSIONS ARE MEASURED TO THE EXTERIOR BOUNDARIES OF THE EXTERIOR WALLS AND THE CENTERLINE OF INTERIOR DEMISING WALLS AND THEREFORE, THE STATED SQUARE FOOTAGE OF THE UNITS MAY VARY FROM THE SQUARE FOOTAGE THAT WOULD BE DETERMINED BY USING THE DESCRIPTION OF THE "UNIT" SET FORTH IN THE DECLARATION.